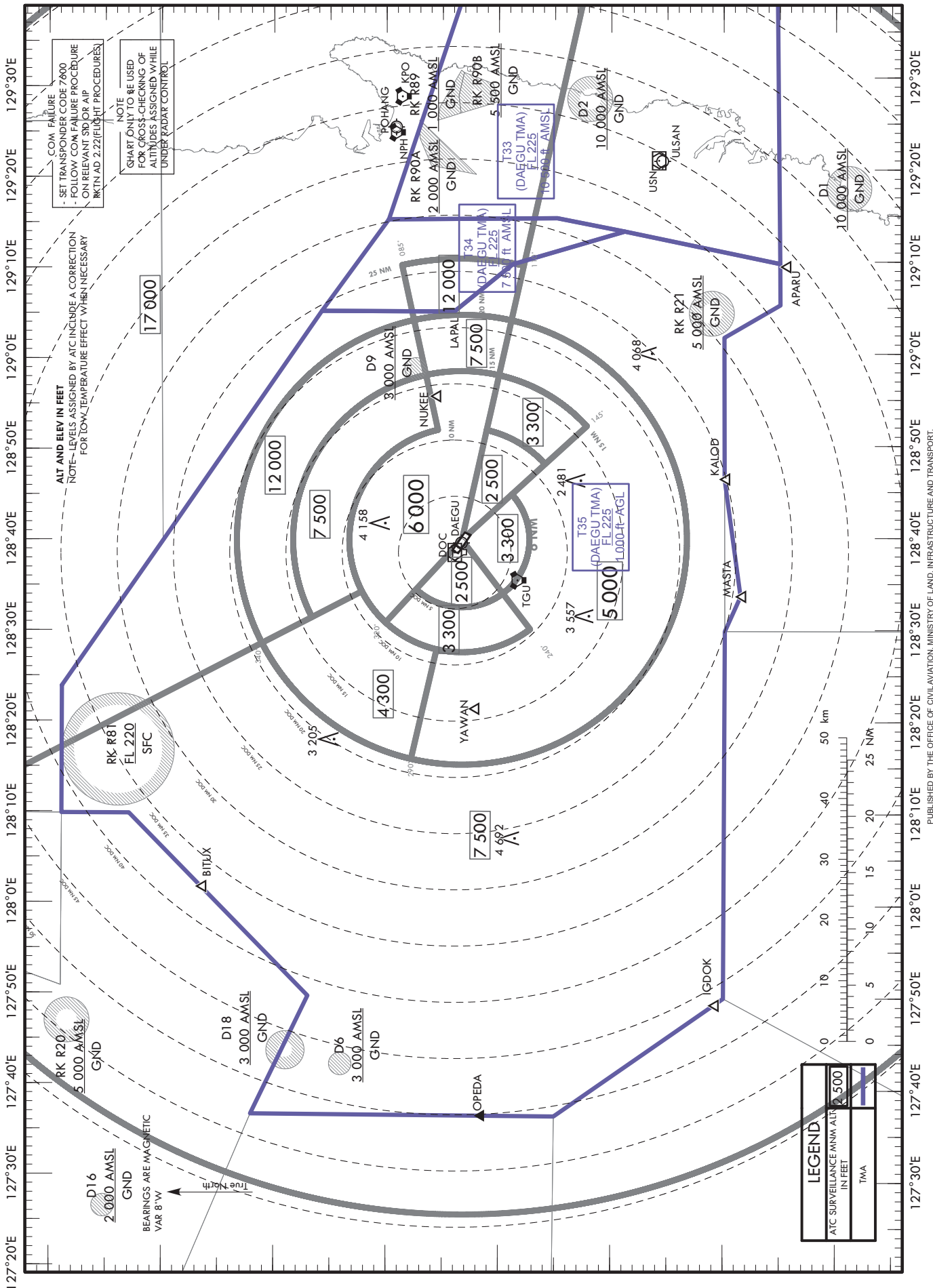


**ATC SURVEILLANCE MINIMUM
ALTITUDE CHART - ICAO**

AERODROME ELEV 120 ft
TRANSITION ALT 14 000 ft

APP 135.9 346.3
DEF 135.9 230.3

DAEGU/Daegu Intl (RKTN)



NOTE
CHART ONLY TO BE USED
FOR CROSS-CHECKING OF
ALTITUDES ASSIGNED WHILE
UNDER RADAR CONTROL

ALT AND ELEV IN FEET
NOTE - LEVELS ASSIGNED BY ATC INCLUDE A CORRECTION
FOR TOW TEMPERATURE EFFECT WHEN NECESSARY

COM FAILURE
SET TRANSPONDER CODE 7400
FOLLOW COM FAILURE PROCEDURE
ON RELEVANT SID OR AIP
RKTN AD 2.22 (FLIGHT PROCEDURES)

LEGEND	
ATC SURVEILLANCE MINM ALT IN FEET	(Symbol: Dashed circle)
TMA	(Symbol: Solid line)

Change : Information of fix name.

INTENTIONALLY

LEFT

BLANK